



New Residence – Boyceville, Wisconsin

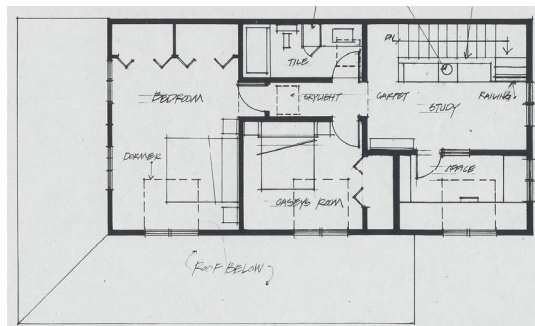
Site: Located 90 miles northeast of Minneapolis, the 80-acre hilltop site commands a 270-degree view of the surrounding countryside. The house is positioned in the northeast corner of a meadow backed by the native white pine forest. The home's southeast orientation maximizes its solar exposure capturing the sun's warmth in the long cold winters.

Program: A 2,400 s.f., three bedroom, three-bath home on three levels (with a walk-out basement). The views predominated; over scaled windows capture the views and southern exposure.

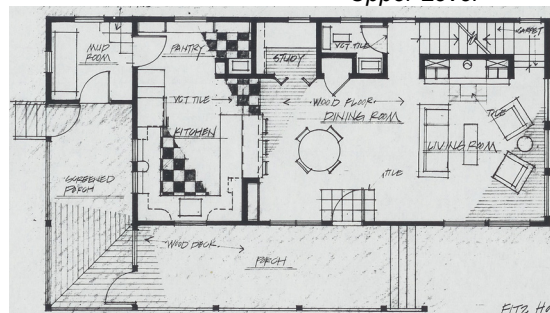
Precedence: The expansion of the railroad in the 19th century brought economical building materials and construction techniques to the Midwest. This two-story "I-House" (two rooms wide and one room deep) suited the small farmers of that era well. The houses exhibited patterns of porches, chimneys and room extensions that established a vernacular of rural farmhouses that to this day remain an American icon. The design draws from these local inspirations.

Materials: A focus on traditional materials and cost governed the selections of cedar board and batten siding, asphalt shingle roofing, maple flooring, pine millwork and "Pella" clad wood windows.

Structure: Following the "I-House" principles, the house is an efficient 20'-0" wide by 48'-0" long built of 2"x6" wood framing on a concrete foundation. The scissors truss roof permitted a full span increasing the upper floor ceiling heights. Likewise, the TJI floor joists spanned the width, opening the interior floor plans. The efficiencies in this system contributed to the \$75/s.f. building cost.



Upper Level



Main Level