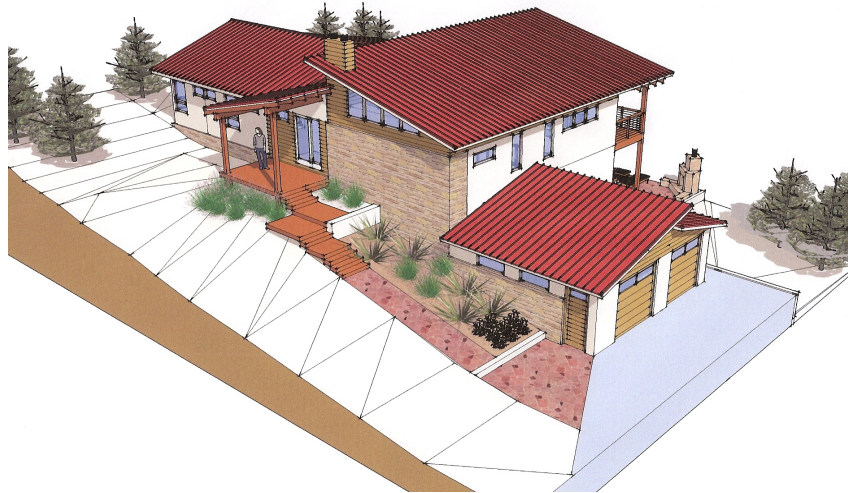




Mountain View



Southeast



Southwest



Decks/Patio

New Residence – Westcliffe, Colorado

Design: Winter 2011

Site: Located in the Sangre de Cristo Mountains southwest of Denver at 8,100 ft. elevation, the 35 acre site capitalizes on the spectacular 180 degree mountain view.

Program: The 3,000 s.f contemporary mountain home on two levels includes generous outdoor decks connecting to the landscape. The large sloping roof encompasses the Kitchen, Dining and Great Room-all focused on the tremendous mountain view. The adjacent bedroom wing includes the Entry, Mud Room/Laundry, Study, Powder Room and Master Suite. The Lower Level includes a Family Room, Guest Bedroom and Bath, Office, and Utility Room. French doors connect to the outdoor patio with fireplace.

Materials: Local indigenous materials utilized include stucco and standing seam metal roofing. Contemporary materials include aluminum clad wood windows, fibercement siding and composite decking with cable rail railings. Low maintenance and fire resistance of materials were an important criteria. A new outbuilding with photovoltaic panels will provide power.



Great Room