



Living Room



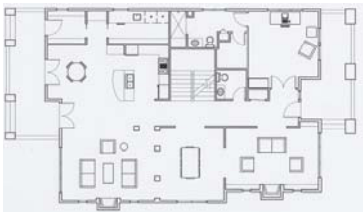
Kitchen



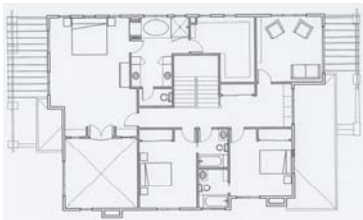
East Elevation



West Elevation



Main Level Plan



Upper Level Plan

New Residence – Denver, Colorado

Completed: Spring 2007

Site: Located in the “Observatory Park” neighborhood in south Denver, this residence is positioned in a neighborhood undergoing a building renaissance. Designed within the tight constraints of the zoning envelope, the house’s scale and proportion blends into the traditional streetscape.

Program: The plans include a 3,760 s.f., five bedroom, six-bath home on two levels. A partially finished 2,060 s.f. basement level includes a Wine Cellar, Guest Bedroom and Media Room. Amenities include trellised front and rear porches, three fireplaces, two laundries and a detached three car garage. A two story Great Room connects both levels adjacent to the open Kitchen /Nook area. A separate Living Room and Guest Study area complete the Main Level. The upper level includes the Master Suite and two bedrooms with baths. A special, 12’0” peaked ceiling Upper Level Study “Tower” anchors the corner.

Precedence: The house’s composition draws upon traditional “Mission Style” design and detailing.

Materials: An exterior stucco finish complements the Mission style concrete tile roof. The trellis covered porches provide outdoor terraces facing east and west. An open stairway with an overhead skylight connects all three levels. Wood floors, wainscoting, granite counters and wood cabinetry are used throughout the interiors.