



South Elevation



East Elevation



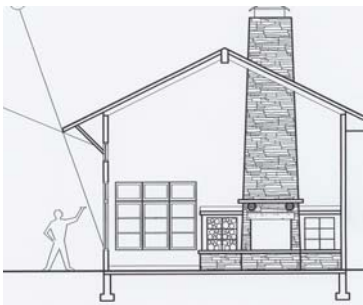
View to southwest



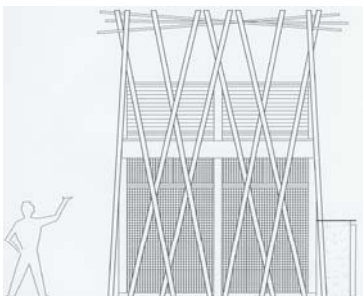
Site Plan



Floor Plan



Great Room Section



"Lookout"

## New Residence – Walsenburg, Colorado

Phase: Design

**Site:** Located in the foothills southwest of Walsenburg, this 42 acre site encompasses a beautiful view of the nearby Spanish Peaks. The relatively level home site offers excellent solar exposure, and is surrounded by juniper, pine and scrub oak trees on the gently rolling landscape.

**Program:** The 3,000 s.f., two bedroom, two-bath home on one level is planned as a "self-contained" retirement home for a couple with no children. The design is predicated on the principles of passive solar heating and cooling, utilizing thermal mass and solar orientation. Future plans include the addition of active and photovoltaic panels. Two courtyards, north and south, define the site and anchor the home. Amenities include an outdoor kitchen, screened porches, a separate Master Suite with sauna, adjacent courtyard and fountain. A two story Great Room with a stone fireplace contains large windows to capture the sun and views. A large open Kitchen and Pantry caters to the homeowner's love of cooking. A two-story "lookout" anchors the south courtyard with an upper deck over a screened "sleep-over" room for summer guests.

**Precedence:** The house's design draws upon traditional southwestern ranch style homes with covered porches facing enclosed courtyards.

**Materials:** A southwestern stucco finish wraps the entire house and the courtyard walls. Standing seam metal roofing provides a fire-resistant and durable roof finish. The courtyard paving includes a mix of sandstone paving and granite fines. Lower stucco walls contain raised courtyard gardens and an outdoor fire pit. Wood trim, doors and gates complete the exterior trim. Interior finishes utilize a contemporary rendition of traditional southwestern materials: ceramic tile, wood trim and cabinetry with wood beamed ceilings in the Great Room. A massive stone fireplace and wood cabinets center the Great Room seating area

