



Master Bedroom



New Deck



East



Model - NW



West – Second Floor Addition



North-New Balcony

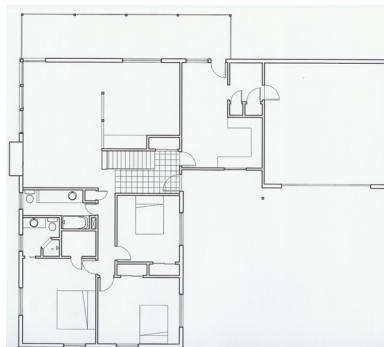
Residence Remodel – Wheat Ridge, Colorado

Site: Located in the scenic Skyline neighborhood, this 1965 ranch house is positioned with a panoramic mountain view to the west. The Master bedroom suite addition capitalizes on these views while conforming to the second story square foot limitations of the neighborhood covenants. The large lot slopes to the northwest and is surrounded with mature landscaping. The exterior materials, massing and detailing expand the vocabulary of the existing house.

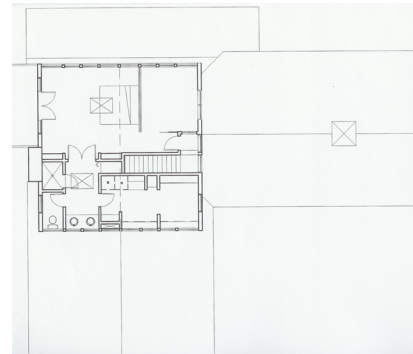
Program: The remodel work includes a new 820 s.f. Master Bedroom Suite as a “pop-top” second story addition. The suite includes a laundry room, a Japanese inspired “Yoga” exercise area and a bathroom with whirlpool tub and shower/sauna. A new balcony opens to the mountain view to the west.

Precedence: The 1960’s era Skyline neighborhood includes a number of ranch houses reminiscent of the “modern” residential designs made popular in Southern California at the time. Known as “Eichler Homes”, they featured wood post and beam exposed sloping ceilings, open floor plans and use of natural materials and finishes.

Materials: Exterior wood vertical board and batten siding, horizontal lap siding and cedar roof shingles tie the addition to the existing house. The post and beam wood ceiling lifts up at the dormers to increase the views and daylighting to the east and west. Windows at the east and west gable ends contribute additional daylight to the interiors while screening views.



Main Floor



New Upper Floor