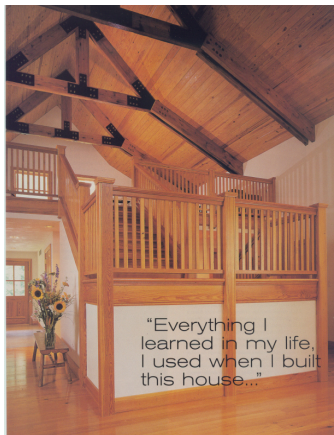


"St. Louis Homes and Lifestyles" magazine, August 1999



"Everything I learned in my life, I used when I built this house..."



## New Residence – Columbia, Illinois

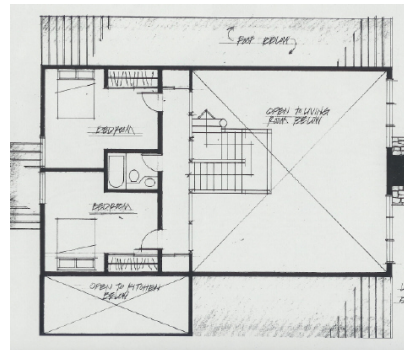
**Site:** The house is situated on a 12-acre wooded site on top of a bluff overlooking the Mississippi River valley, 25 miles south of St. Louis, Mo. The house capitalizes on southern exposures and bluff top views.

**Program:** A three bedroom, two bath, 2,400 s.f. house on two levels with an unfinished basement. A central "Great Room" with a 28-foot exposed wood trussed ceiling is open to two levels.

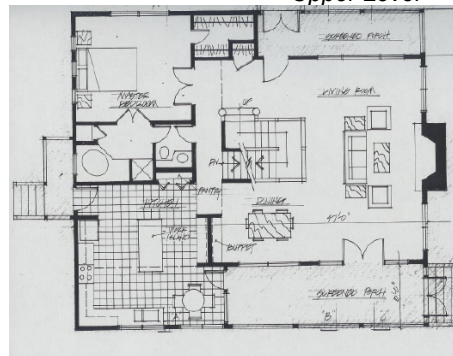
**Precedence:** The surrounding eastern Illinois farming community is ripe with history, including the Cahokia Indian Mounds, a Lewis and Clark outpost upriver and the French Settler's 1792 Amoureux House in St. Genevieve, Mo. The design draws upon these early influences incorporating Norman wood trusses, limestone fireplace and trim and generous porches.

**Materials:** Standing seam Gavalume metal roofing, cypress wood siding, local limestone masonry, custom maple cabinetry, custom pine millwork, reclaimed pine flooring, Marvin wood windows.

**Structure:** The marriage of recycled 18<sup>th</sup> century framing timbers and a traditional roof frame design led to the 48'-0" span exposed wood trusses sheltering the living space and exterior porches. The steel connected timber truss is supported by exterior cypress columns and interior laminated posts framed with 2"x6" wood stud walls. A concrete foundation with perimeter limestone ledge supports the TJI floor joist frame. Structural insulated panels provide the roof sheathing.



Upper Level



Main Level

